



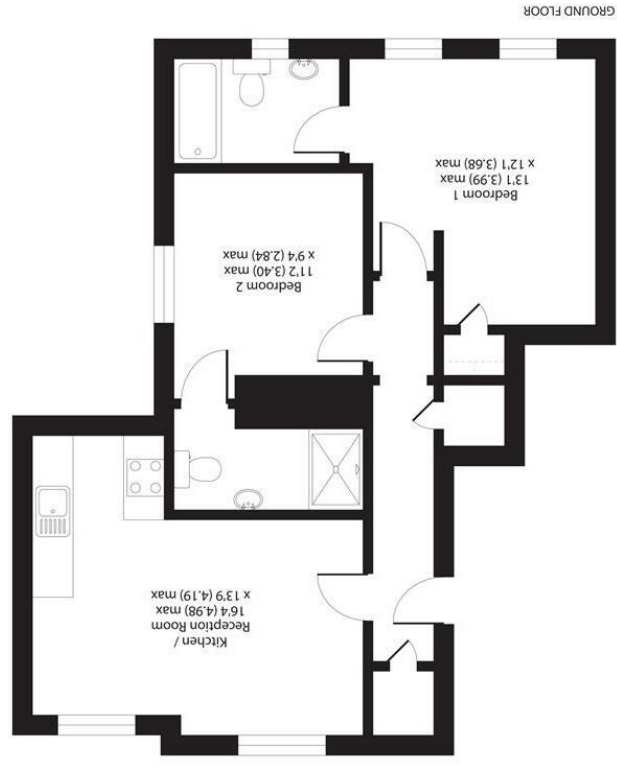


Important Information  
 All appliances listed in these details are only 'as seen' and have not been tested by Gibson Lane, nor have we sought certification of warranty or service, unless otherwise stated.  
 Measurements, areas and distances are approximate. Floor plans and photographs are for guidance purposes only and must not be relied upon for any purpose. These details are offered on the understanding that all negotiations are made through this company. Neither these particulars, nor verbal representations, form part of any offer or contract, and their accuracy cannot be guaranteed.

| Environment Impact (CO <sub>2</sub> ) Rating   | Energy Efficiency Rating  |
|--|---|
|  G<br>The maximum energy demand is 120 kWh/m <sup>2</sup> per year. |  57<br>The maximum CO <sub>2</sub> emissions are 25.0 tonnes per year. |
|  G<br>The maximum energy demand is 120 kWh/m <sup>2</sup> per year. |  58<br>The maximum CO <sub>2</sub> emissions are 25.0 tonnes per year. |



APPROX. GROSS INTERNAL FLOOR AREA 650 SQ FT 60.4 SQ METRES  
 (EXCLUDES RESTRICTED HEAD HEIGHT)

34 Richmond Road  
 Kingston upon Thames  
 Surrey  
 KT12 5ED  
 www.gibsonlane.co.uk  
 Tel: 020 8546 5444







## Cambridge Road

Kingston Upon Thames KT1 3JX

Guide Price £385,000

A two bedroom, two bathroom ground floor flat offered with a share of the freehold and off street parking for two cars.

### Description

A beautifully presented ground floor conversion apartment situated in a popular location in Kingston within easy reach of both Norbiton and Kingston stations. Internally the property offers two double bedrooms both with en-suite bathrooms, a spacious open plan kitchen/living area and fantastic built in storage throughout. The flat is finished to a high standard internally and benefits from two off street parking spaces as well as a share of the Freehold. (NB Photos taken pre tenancy January 2021)

### Situation

Cambridge Road is conveniently situated for Norbiton station and Kingston town centre with its extensive range of shops, bars and restaurants and overground station with a direct service into Waterloo. Fairfield Park offering its many acres of open space is nearby and the area is well served by local buses.

**Tenure:** Share of Freehold  
**Local Authority:** Kingston Upon Thames

